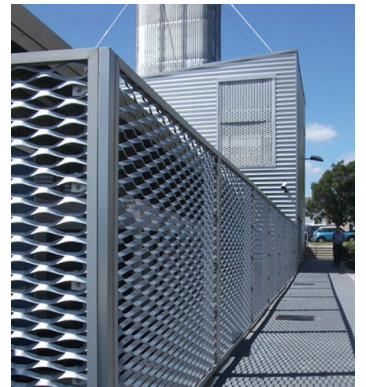


## Project Name: Nottingham University Superlab

# Architectural



**Anodised Broadway expanded metal cladding** installed at the energy centre at Nottingham University Superlab.

The mesh was rolled to form a curved transparent shell to the chimney stack.

	<p><b>Material:</b> Broadway Expanded Metal</p>		<p><b>Installation:</b> Expanded Metal Mounting System</p>
--	---	--	--

www.architecturalwiremesh.com

Locker Architectural Ltd, Farrell Street, Warrington, WA1 2WW, United Kingdom  
 sales@lockergroup.com Tel: +44 (0)1925 406600 Fax: +44 (0)1925 444386

