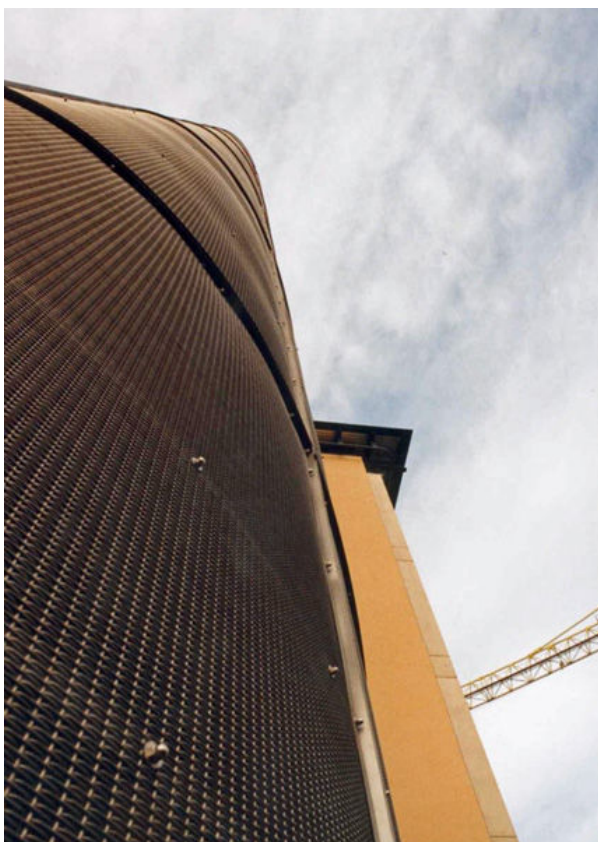


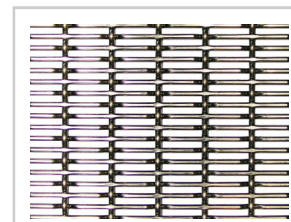
Project Name: International Centre for Life

Architectural



Brocklebank 20/3 architectural mesh installed as fire escape staircase cladding at the International Centre for Life, Newcastle Upon Tyne. The closely woven mesh was produced with contrasting surface textures on the front and back to achieve the futuristic design by architects Terry Farrell and Partners.

The mesh has wind and weather resistant qualities and provides permanent ventilation for firefighters whilst also being completely fireproof. The stainless steel mesh is shown here with a golden hue as it reflects the warm glow of Autumn sunshine.



Material:
Brocklebank
20/3 Pre-crimped Mesh

www.architecturalwiremesh.com

Locker Architectural Ltd, Farrell Street, Warrington, WA1 2WW, United Kingdom
sales@lockergroup.com Tel: +44 (0)1925 406600 Fax: +44 (0)1925 444386