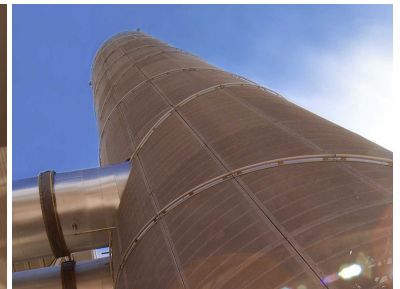
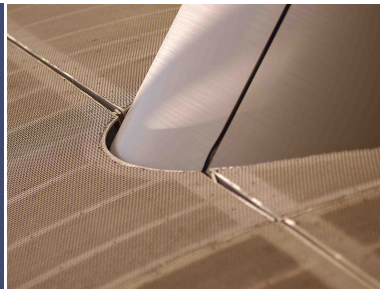
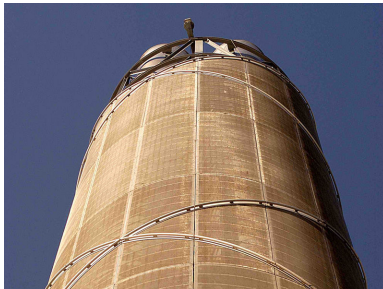


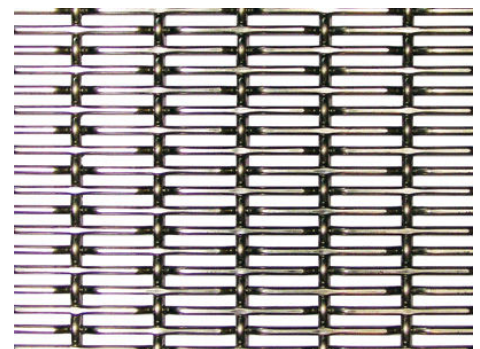
Project Name: Pulrose Power Station, Isle of Man



As part of a major refurbishment, **Brocklebank 20/3** decorative wire mesh cladding was added to the concrete chimney stacks at Pulrose Power Station, Isle of Man.

The effect of the mesh is to visually soften the structures against the surrounding landscape. Shown here, the mesh cladding has taken on a beautiful golden hue in the Autumnal sunlight.

The specification used for this project is:  
Open Area: 47%, Weight: 9.82 Kg/m<sup>2</sup>,  
Thickness: 5.5 mm.



**Material:**  
Brocklebank 20/3 Pre-crimped  
Mesh

www.architecturalwiremesh.com

Locker Architectural Ltd, Farrell Street, Warrington, WA1 2WW, United Kingdom  
sales@lockergroup.com Tel: +44 (0)1925 406600 Fax: +44 (0)1925 444386

