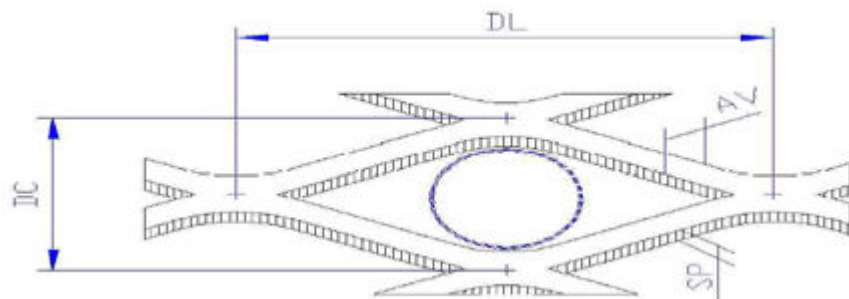
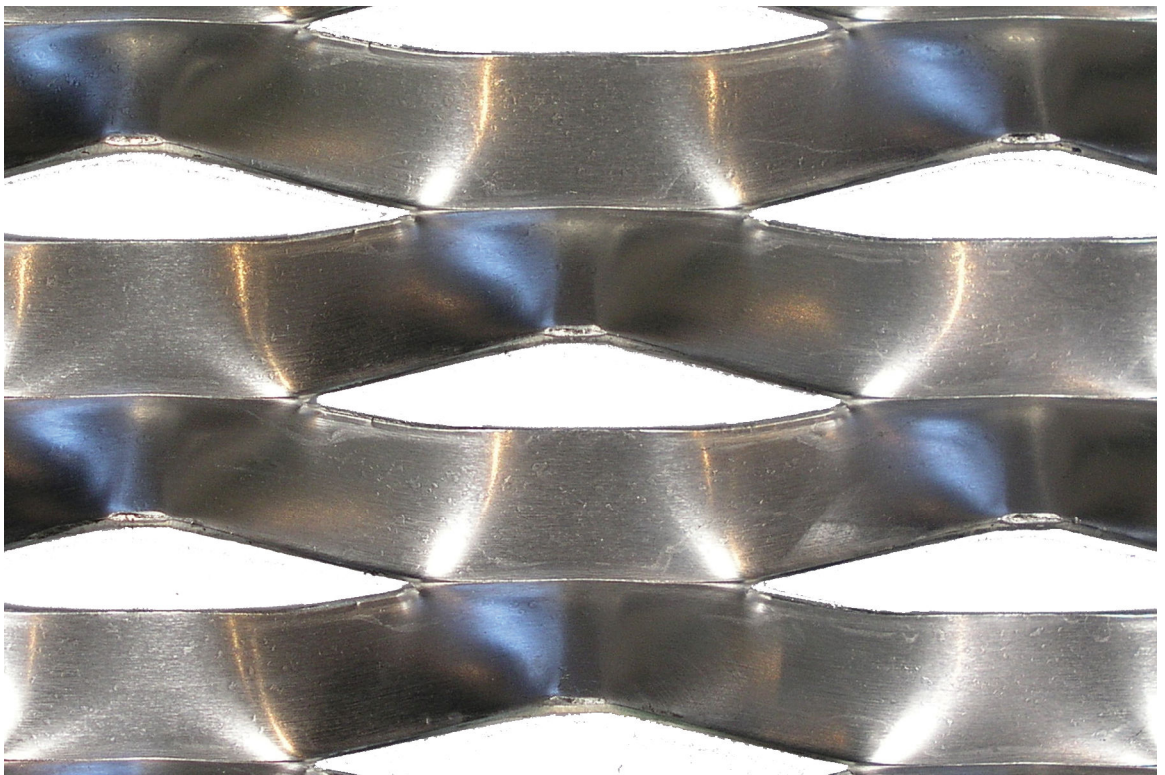


Garston Architectural Expanded Metal



Scale 1:1

Specification

CL	115 mm	DC	48 mm
AV	20 mm	SP	3 mm
Weight	6.7 Kgs/m ²	Open Area	20 %

Availability

Aluminium natural, painted, powder coated or anodised. Interior and exterior grades of stainless steel.

Locker is a UK based supplier of architectural wire mesh products certified to BS EN ISO 9001:2008. With comprehensive in house AutoCAD facilities we are able to offer a complete package from development of the architectural wire mesh specification through design, fabrication, supply and installation of the finished screens.

www.architecturalwiremesh.com

Locker Architectural Ltd, Farrell Street, Warrington, WA1 2WW, United Kingdom
 sales@lockergroup.com Tel: +44 (0)1925 406600 Fax: +44 (0)1925 444386