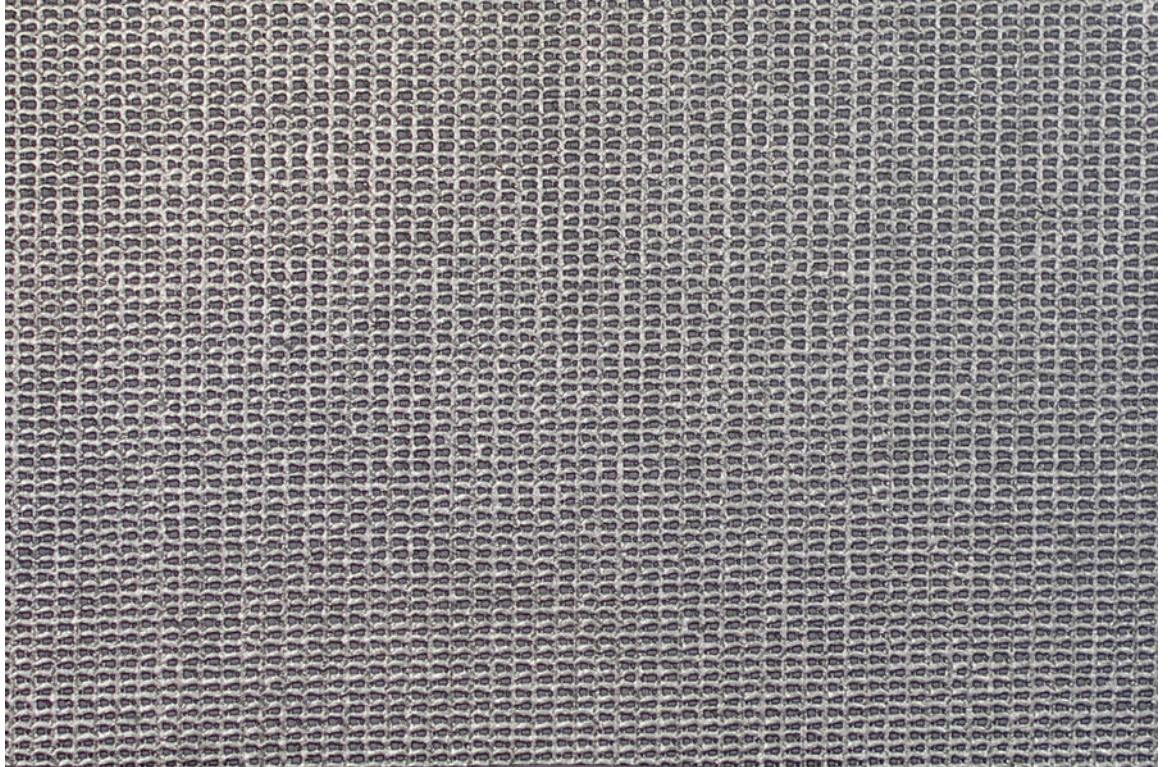


## Chineham 371FT Architectural Mesh



Scale 1:1

### Specification

Yarn	1100/2200 dtex PES HT		
Weight	440 g/m <sup>2</sup>	Width	2670 mm
Tensile strength (warp/weft)	300/300 daN/5 cm	Tear strength (warp/weft)	60/60 daN
Adhesion	9/9 daN/5 cm	Porosity	± 20%

### Availability

This product is available in many different forms and can be tailored to individual project requirements.

### Typical Applications

Advertising façade and textile cladding.

Locker is a UK based supplier of architectural wire mesh products certified to BS EN ISO 9001:2008. With comprehensive in house AutoCAD facilities we are able to offer a complete package from development of the architectural wire mesh specification through design, fabrication, supply and installation of the finished screens.

[www.architecturalwiremesh.com](http://www.architecturalwiremesh.com)

Locker Architectural Ltd, Farrell Street, Warrington, WA1 2WW, United Kingdom  
 sales@lockergroup.com Tel: +44 (0)1925 406600 Fax: +44 (0)1925 444386